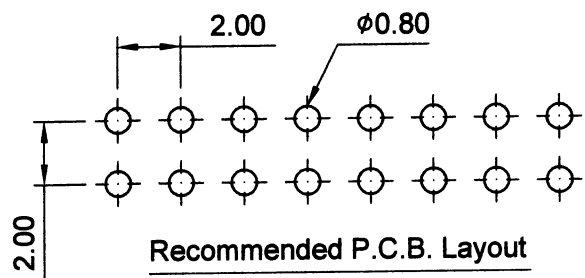
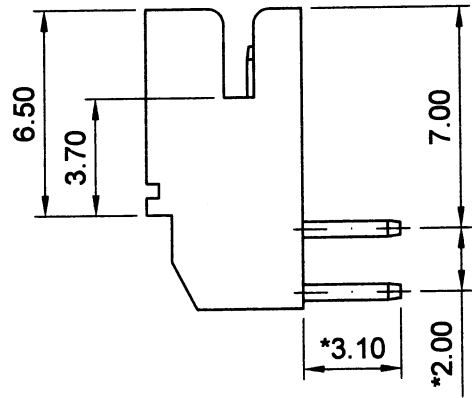
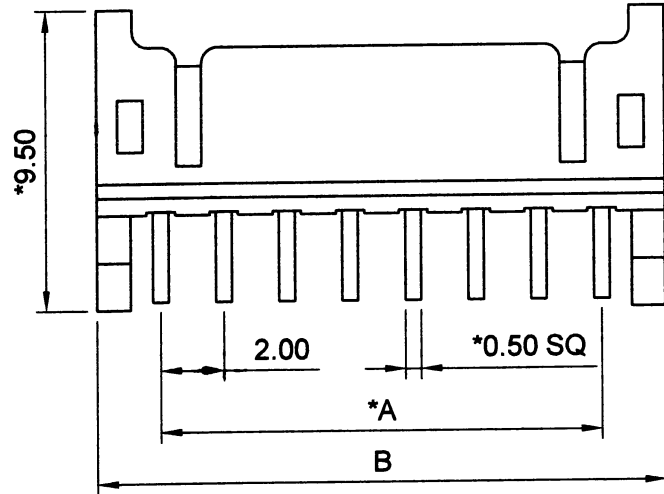
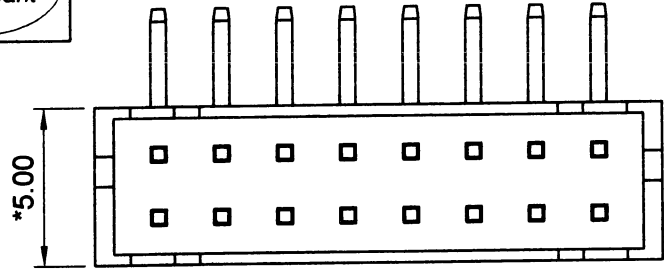


**HSF**  
Compliant

REV.	DESCRIPTION	DATE	APPR.
02	ADD. 4 PIN	2009/05/19	陳世官



**Specifications**  
 Current & Voltage Rating : 2A & 250V AC, DC  
 Insulation Resistance : 1000 MΩ min.  
 Contact Resistance : 20 mΩ max.  
 Operating Temperature : -25°C ~ +85°C  
 Contact Material : Brass  
 Insulator Material : Nylon-66 + G.F., UL 94V-0 (Natural)  
 Finish : Tin plated  
 Packing : Bag

200F-WRD-xxT  
 No. of contacts

No. of contacts	Dimension	
	A	B
04	2.0	6.0
06	4.0	8.0
08	6.0	10.0
10	8.0	12.0
12	10.0	14.0
14	12.0	16.0
16	14.0	18.0
18	16.0	20.0
20	18.0	22.0
22	20.0	24.0
24	22.0	26.0
26	24.0	28.0
28	26.0	30.0
30	28.0	32.0
32	30.0	34.0

**JAWS** 兆旭股份有限公司  
 JAWS CO., LTD.  
 7F., No.31, Ln. 169, Kangning St., Xizhi Dist.,  
 New Taipei City 221, Taiwan (R.O.C.)  
 TEL:886-2-2692-2898  
 FAX:886-2-2692-2618  
 Http://www.jaws.com.tw

THIRD ANGLE PROJECTION  
 DESIGN UNITS  
 ■ mm □ INCH  
 SIZE: A4 SCALE: FREE SHEET: 1/1  
 CPN :  
 DAN NO.: S10104-044

TITLE: 2.0mm PHD Wafer Dual Rows Side Entry  
 PARTS NO.: 200F-WRD-xxT  
 DWG NO.: JAWS-SOP-200F007  
 REV. 02

GENERAL TOLERANCES :  
 X. ±N/A  
 X.X ±0.35  
 X.XX ±0.25  
 ANGLE ±N/A  
 DRAWN 林峻吉 DATE 2012/04/27  
 CHECKED Wang DATE 2012/04/27  
 APPROVED Arsen DATE 2012/04/27